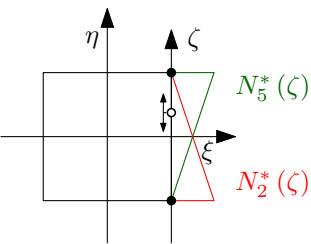


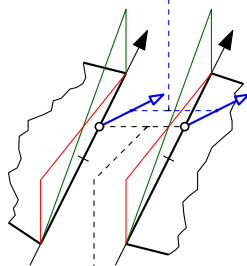
$$u = u_5 N_5^*(\zeta) + u_2 N_2^*(\zeta)$$

$$v = v_5 N_5^*(\zeta) + v_2 N_2^*(\zeta)$$



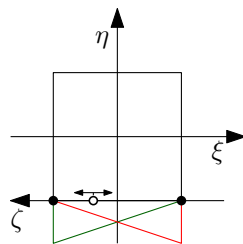
$$\zeta \equiv \eta$$

$$\xi = 1$$



$$x = x_5 N_5^*(\zeta) + x_2 N_2^*(\zeta)$$

$$y = y_5 N_5^*(\zeta) + y_2 N_2^*(\zeta)$$



$$\zeta \equiv -\xi$$

$$\eta = -1$$

scorrendo $\zeta \in [-1, 1]$ osservo la continuità degli spostamenti per ogni punto del lato condiviso dai due elementi